

KUB Basic & KUB premium

USER GUIDE

TABLE OF CONTENTS

English

Instructions

1. Important safety information.....	4
2. TECHNICAL ASPECTS.....	8
3. INCLUDED IN THE BOX.....	9
4. ELECTRIC RATING.....	10
5. OPERATING AND STORAGE TEMPERATURES.....	10
5. Install your Touchland KUB smart dispenser (STEP 1).....	11
6. Activate smart features by downloading the APP (STEP 2).....	13
7. Install the sanitizer Refeel Cartridge (STEP 3).....	14
8. Start using your dispenser (STEP 4).....	14
9. Connect external supply for KUB BASIC.....	15
10. Charge the battery for KUB PREMIUM ONLY.....	15
11. Cleaning and maintenance.....	17
12. Service.....	17
13. DISPOSING For the European Union market (For Kub Premium).....	17

Intellectual property..... 19

Warranty information..... 19

IMPORTANT SAFETY INFORMATION

READ THIS INFORMATION BEFORE USING YOUR DEVICE

Before you use your Touchland device, it is important that you read the compliance information and the legal notice guidelines for the safe use of your device that are found in this guide. To find the latest information, visit www.touchland.com.

Please read the legal notice below carefully as the notice contains limitations and exclusions of the liability of Touchland Limited and its subsidiaries. This instruction manual covers 2 versions of Kub devices: Kub Basic model n° M280 and Kub premium model n° M280L.

- This appliance is not intended for use by persons (including children) with reduced physical, sensory or mental capabilities, or lack of experience and knowledge, unless they have been given supervision or instruction concerning use of the appliance by a person responsible for their safety.
- This appliance can be used by children aged from 8 years and above and persons with reduced physical, sensory or mental capabilities or lack of experience and knowledge if they have been given supervision or instruction concerning use of the appliance in a safe way and understand the hazards involved. Children shall not play with the appliance. Cleaning and user maintenance shall not be made by children without supervision.
- This product is not a toy. Intended for adult use only.
- Children should be supervised to ensure that they do not play with the appliance.
- Cleaning and user maintenance shall not be made by children without supervision.

- The appliance must be disconnected from the supply mains when removing the battery;
- Do not immerse in water.
- This product is for indoor use only. Do not use outdoors.
- It is not intended for use in wet, damp or condition of extreme humidity. Operation in these conditions could severely affect the life of the product and could compromise its safety.
- To reduce the risk of injury, close supervision is necessary when a product is used near children. **KEEP OUT OF REACH OF CHILDREN.**
- DO NOT put fingers, hands, metal or other foreign objects in the product.
- DO NOT expose the appliance to fire or excessive temperature. Exposure to fire or temperature above 130°C/265°F may cause explosion. Devices are not inherently safe and cannot be used in the presence of explosive fumes, explosive dust or other explosive chemicals. Sparks in such areas could cause an explosion or fire resulting in serious injury, death or damage to property.
- USE ONLY Touchland refill. Touchland will not be held responsible for damage, injury or poor performance caused by use of any other refills in Touchland device.
- Do not modify or attempt to repair the appliance except as indicated in the instructions for use and care. Have servicing performed by a qualified repair person using only identical replacement parts. This will ensure that the safety of the product is maintained.
- Do not place the device or accessory on any unstable surface. It could fall, thereby potentially causing serious injury to a person and serious damage to the device or device accessory. Take care when using the device with any power supply accessory to route the power cord in a way that reduces the risk of injury to other, such as by tripping or choking.

- Always keep the consumable and the device in an upright position. Do not operate with wet hands or metal objects.

For Kub Basic (Model: M280):

- Batteries are to be inserted with the correct polarity.
- Non-rechargeable batteries are not to be recharged.
- Rechargeable batteries are to be removed from the appliance before being charged.
- Different types of batteries or new and used batteries are not to be mixed.
- Exhausted batteries are to be removed from the appliance and safely disposed of.
- If the appliance is to be stored unused for a long period, the batteries should be removed.
- The appliance shall be supplied at safety extra low voltage corresponding to 5Vdc, max. 1000 mA, when use USB Inlet.
- The supply terminals are not to be short-circuited.
- Batteries must be recycled. The batteries must be removed from the appliance before it is scrapped.
- If any Leakage from the batteries is noted, remove them immediately and remove any leaked material.
- Ensure that the 4 D Cell 1,5 Vdc alkaline batteries are inserted correctly aligning the (+) and (-) terminals as indicated under the battery door. Open the battery door insert the batteries and close the battery door. Use the same process to remove the batteries

For Kub Premium (Model: M280L):

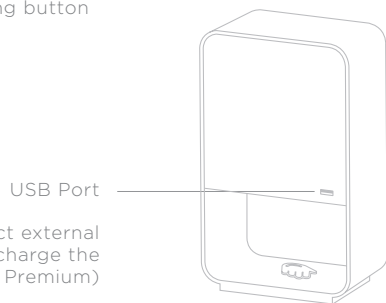
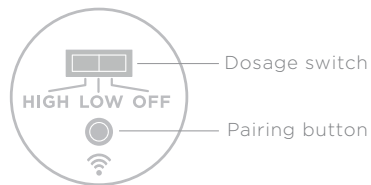
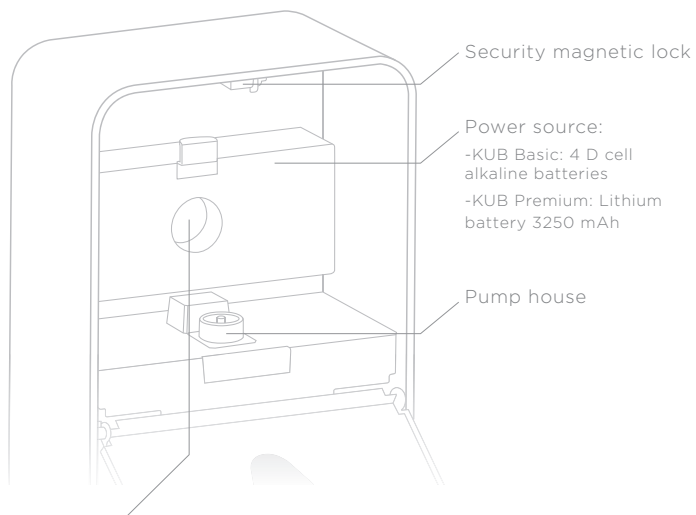
- Use only with adaptors listed below with plug shape for appropriate countries:
HJ-0501000B2-EU, for Europe; HJ-0501000B2-US, for American
HJ-0501000B2-UK, for United Kingdom; HJ-0501000B2-AU, for Australia; HJ-0501000B2-KR, for Korea; HJ-0501000B2-CN, for China; HJ-0501000B2-AR, for Argentina; HJ-0501000B2-JP, for Japan or HJ-0501000B2-MX, for Mexico, with an output: 5VDC - 1000 mA.
- **WARNING:** For the purposes of recharging the battery, only use the detachable supply unit provided with this appliance.
- Follow all charging instructions and do not charge the appliance outside of the temperature range specified in the instructions. Charging improperly or at temperatures outside of the specified range may damage the battery and increase the risk of fire.

PRODUCT SAFETY

The device uses a consumable containing Alcohol as parts of its process. Please read and understand the instruction before using the device, taking care to take the necessary precautions. During the consumable change procedure, it is recommended to take measures to avoid the substance contacting eyes. Keep out of eyes. In case of eye contact immediately flush eyes with water. If irritation persists, get medical attention. If swallowed, contact physician. For external use only. Keep out of reach of children. Flammable, keep away from heat of flames.

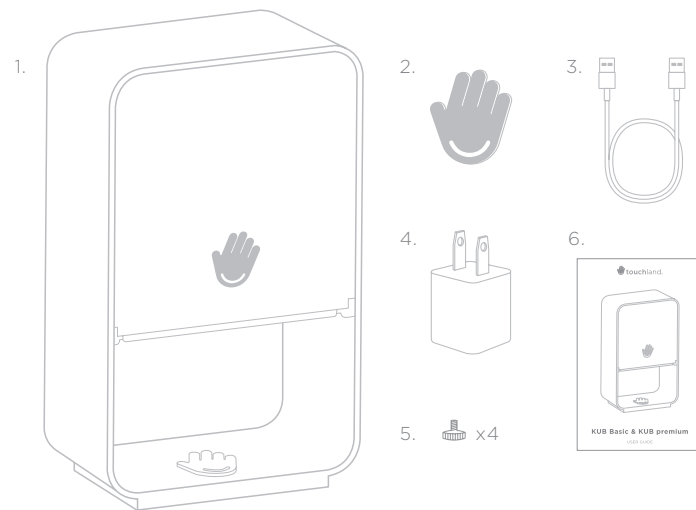
SAVE THESE INSTRUCTIONS

TECHNICAL ASPECTS





Check the sections connect external supply (Kub Basic) and charge the battery (Kub Premium)

INCLUDED IN THE BOX



1. KUB device
2. Magnetic locker key
3. USB cable
4. 5V/1000 mA USB Charger (ONLY INCLUDED FOR KUB PREMIUM)
5. Surface protector plugs (x4) or support fixing plugs*
6. User guide

ELECTRIC RATING

Supply type	For Kub Basic (Model: M280):	For Kub Premium (Model: M280L):
Battery	6V  , alkaline batteries Type D x 4;	3.8V  , 3250 mAh Lithium-ion rechargeable battery
External supply	Micro USB connected, supplied at safety extra low voltage corresponding to 5Vdc, max. 1000 mA	Power supply, type HJ-0501000B2-zz: Input: 100-240VAC, 50/60Hz, 0.15A Output: 5 VDC, 1000mA

This appliance is designed to work maximum 5 cycles per minute, higher frequency usage is not allowed.

ELECTRIC RATING OPERATING AND STORAGE TEMPERATURES

Situate the device or device accessories away from heat sources, such as radiators, cooking or heating appliances. Do not store your device in temperature below 41°F (5°C) or above 122°F (50°C).

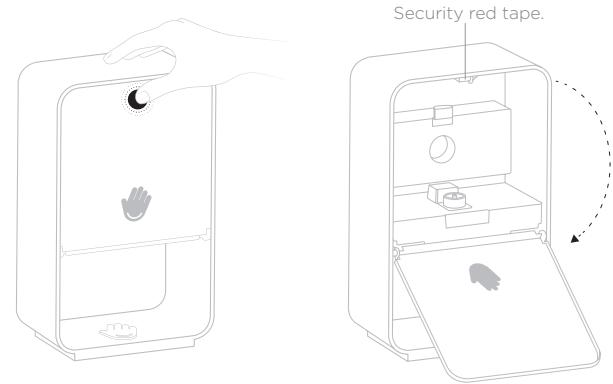
Do not operate your device in temperature below 59°F (15°C) or above 95°F (35°C).

Do not store your Touchland® refill in temperature below 41°F (5°C) or above 86°F (30°C).

STEP 1

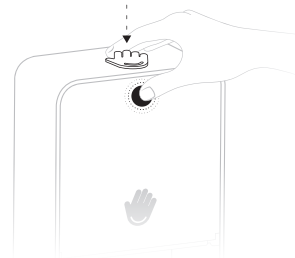
Install your TOUCHLAND KUB Smart dispenser.

1. Open dispenser by pushing the door.



OPTIONAL

Security lock activation

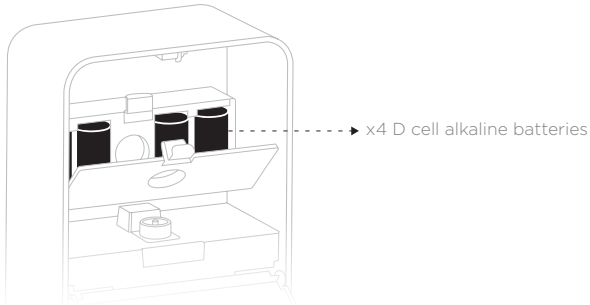


CAUTION: When removing the security red tape on the locker, door will remain blocked once closed. Magnetic key is needed to unlock the door. Place the magnetic key on the middle top, frontward, then press the front door. The metal click sound means that the door has been unlocked. Keep magnets away from devices and objects that could be damaged by strong magnetic fields.

*To install the surface protector plugs into the device, screw the plugs on the bottom of the device holes to avoid scratches on the surface. The surface protector plugs are also valid to fix the device into the floor-stand or wall-mount accessories (sold separately with their own assembly instructions).

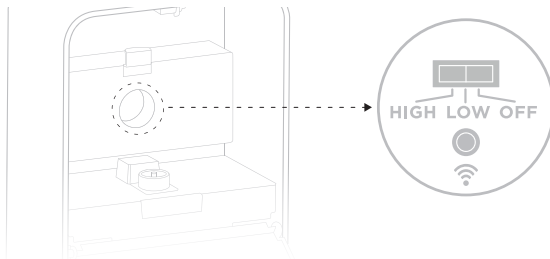
2. Place 4 D batteries by opening the battery box cover.
(**Not applicable for KUB Premium** – go to next point directly).

Ensure that the 4 D Cell 1,5 Vdc alkaline batteries are inserted correctly aligning the (+) and (-) terminals as indicated under the battery door. Open the battery door, insert the batteries and close the battery door. Use the same process to remove the batteries.



3. Your device comes in OFF position. To activate, switch the indicator to the preferred dosage:

LOW = 0.017 fl oz (0.5 mL) or,
HIGH = 0.027 fl oz (0.8 mL)
OFF = turn off device.



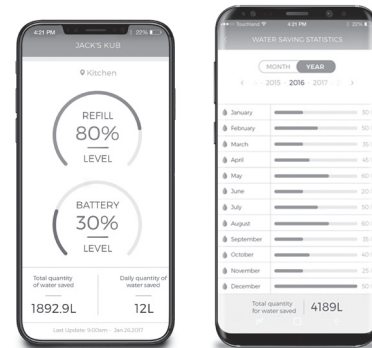
4. Indicator light will blink white twice once dosage has been selected.

IMPORTANT: you must complete step #2 before using your dispenser with all its smart features. Or pass directly to step 3 if you don't want activate its smart features.

STEP 2

Activate smart features by downloading the App.

1. Download TOUCHLAND App through the Google play store (Android) or App store (iOs) by searching for "touchland".
2. Follow the instructions on the App to activate your Smart Dispenser.



You will need:

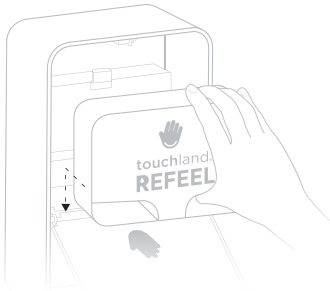
- A Wi-fi enabled device
- Your wi-fi network name and password (wi-fi network cannot have a permission attached)
- An active e-mail account.

Note: The app will indicate you to push the pairing button that is located in the inner circle of control (please check photo).

STEP 3

Install the sanitizer REFEEL Cartridge

1. Open dispenser by pushing the door.
2. Remove the red cap from REFEEL CARTRIDGE.
3. Place the REFEEL CARTRIDGE inside the dispenser (you need to read the frontal side as showed below in the drawing) and ensure that the it is sitting properly in the pump house.



4. When REFEEL cartridge is properly placed indicator light will blink GREEN.

5. Close the door of the dispenser.

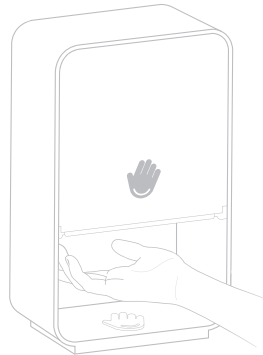
STEP 4

Start using your dispenser

Place your palm under the sensor.

Note: May few activations are needed before the device starts dispensing the liquid after refeel change.

To receive additional product, remove hands from below dispenser and repeat action again.



KUB BASIC (Model: M280) only

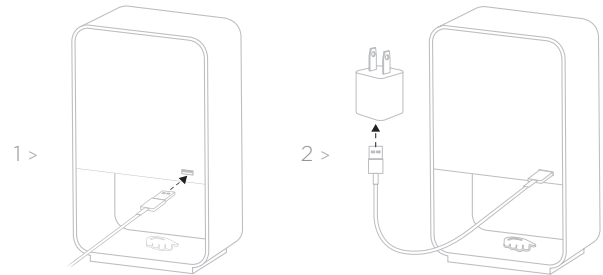
Connect external supply

1. Insert the USB cable into the USB charger / Accessory port.
Caution: Use only charging devices approved by Touchland. Using other accessories may invalidate your warranty and may cause damage.
2. Connect the USB cable to a 5V/1000 mA USB charger, and then plug the USB charger into a standard outlet.
3. Once connected to the plug, batteries will not be charged. Device will only be powered by the cable.

KUB PREMIUM (Model: M280L) only

Charge the battery

Your device is powered by a rechargeable, standard Li-Ion battery. Use only with HJ-0501000B2-zz supply unit, suffix zz changes as per the different world plug configurations (5V DC - 1000 mA). The battery comes partially charged. You can use the device while charging.



1. Insert the USB cable into the USB charger / Accessory port.

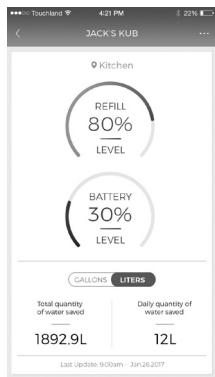
Caution: Use only USB chargers approved by Touchland. Touchland accessories are designed for your device to maximize battery life. Using other accessories may invalidate your warranty and may cause damage.

2. Connect the USB cable to the USB charger, and then plug the USB charger into a standard outlet.

3. Unplug the USB charger from the outlet and remove the USB cable from the device when charging is complete.

When to Charge the Battery

When the battery is low, the device will alert with two red warning lights once placing the hand under the sensor. In this condition, your device conserves its remaining battery power by dispensing for few more doses. When the battery level becomes too low, the device automatically turns off.



For a quick check of your battery level:
> View the battery charge indicator through the APP listed on the “device list” section.

While charging, the device and the charger may become hot. This does not affect the device’s lifespan or performance and is in the device’s normal range of operation.

If the device heats up while charging the battery:

1. Disconnect the charger from the device.
2. Wait for the device to cool down, and then begin charging the device again.

If the device overheats, check for damage to the connected USB cable. Replace the damaged USB cable with a new Touchland approved cable.

CLEANING AND MAINTENANCE

To clean exterior surfaces, disconnect all supply, switch off and wipe with a dry cloth. **DO NOT USE ABRASIVE CLEANERS.** Store your device in temperature below 41°F (5°C) or above 122°F (50°C).

SERVICE

Only qualified service personnel should perform repairs to the device. Refer to the device documentation if any of the following situations occur:

- Liquid has been spilled or objects have fallen into the device.
- The device has been exposed to rain or water.
- The device or power supply accessory becomes very hot to the touch.
- The device has been dropped or damage in any way.
- The device does not operate normally by following the instruction in the user documentation.
- The device exhibits a distinct change in performance.
- Do not attempt to disassemble the device or any power supply accessories.
- An improper adjustment of other controls might cause damage and will often require extensive work by a qualified technician to restore the device, power supply accessory or any other accessory to normal operation.
- Failure to observe all safety instructions contained in the user documentation for the device will void the limited warranty as set out in the legal notice below.

DISPOSING (For Kub Premium):

IMPORTANT: The below instructions are only applicable to comply with the lithium-ion rechargeable battery and device disposal for the European Union Market:

- This appliance contains batteries that are not replaceable.

- The battery must be removed from the appliance before it is scrapped;
- This product contains a lithium-ion rechargeable battery that cannot be replaced and should not be disposed of with normal household waste.
- Exhausted batteries are to be removed from the appliance by skilled and trained technician and safely disposed of according to local regulations. Follow the instructions below to remove the battery from the unit:

Step 1: Remove the screw on the battery cover (located above the switch) by using a cross-head screwdriver,

Step 2: Remove the battery cover box;

Step 3: Remove the connector of the battery from the circuit board and free the battery.

Please note that this process is not reversible.



This marking indicates that the product at the end of its lifespan, is subjected to separate collection and must not be disposed of among urban waste.

The apparatus contains substances that can cause damage to the environment or be a health hazard. Therefore, please dispose of this product at the designated differentiated collection centers supplied by the local authorities, or at the dealerships that supply this service. For information on the differentiated collection and recycling of this product, please consult the dealership.

INTELLECTUAL PROPERTY

In order to protect Touchland proprietary and confidential information and/or trade secrets, this documentation may describe some aspects of Touchland technology in generalized terms.

All Intellectual Property, as defined below, owned by or which is otherwise the property of Touchland or its respective suppliers relating to the TOUCHLAND device, including but not limited to, accessories, parts, or software relating thereto, is proprietary to Touchland and protected under federal laws, state laws, and international treaty provisions. Intellectual Property includes, but is not limited to, inventions (patentable or unpatentable), patents, trade secrets, copyrights, software, computer programs, and related documentation and other works of authorship. You may not infringe or otherwise violate the rights secured by the Intellectual Property. Moreover, you agree that you will not (and will not attempt to) modify, prepare derivative works of, reverse engineer, decompile, disassemble, or otherwise attempt to create source code from the software. No title to or ownership in the Intellectual Property is transferred to you. All applicable rights of the Intellectual Property shall remain with TOUCHLAND and its suppliers.

WARRANTY INFORMATION

Touchland LLC. / Distribuciones Touchland S.L ("Touchland") warrants that Touchland's devices and accessories ("Products") are free from defects in material and workmanship under normal use and service.

Touchland LLC.
117 SW 10TH ST
MIAMI, FL 33130 - USA
Phone:
1-646-401-0090

Distribuciones Touchland S.L.
Calle Ronda Maiols 1, BMC - local 351
08192 Sant Quirze del Valles - Spain
Phone:
+34 935616903

Internet Address:
touchland.com

THIS LIMITED WARRANTY CONTAINS IMPORTANT INFORMATION ABOUT YOUR RIGHTS AND OBLIGATIONS, AS WELL AS LIMITATIONS AND EXCLUSIONS THAT MAY APPLY TO YOU.

1. WHAT THIS LIMITED WARRANTY COVERS; PERIOD OF COVERAGE

Touchland LLC / Distribuciones Touchland S.L.. (“Touchland”), Miami, Florida USA, warrants to the owner of the enclosed product that the product contained in this box (“Product”) will be free from defects in materials and workmanship for a period of two (2) years from the date of delivery following the original retail purchase (the “Warranty Period”). If the Product fails to conform to this Limited Warranty during the Warranty Period, Touchland will, at its sole discretion, either (a) repair or replace any defective Product or component; or (b) accept the return of the Product and refund the money actually paid by the original purchaser for the Product. Repair or replacement may be made with a new or refurbished product or components, at Touchland sole discretion. If the Product or a component incorporated within it is no longer available, Touchland may, at Touchland sole discretion, replace the Product with a similar product of similar function. This is your sole and exclusive remedy for breach of this Limited Warranty. Any Product that has either been repaired or replaced under this Limited Warranty will be covered by the terms of this Limited Warranty for the longer of (a) ninety (90) days from the date of delivery of the repaired Product or replacement Product, or (b) the remaining Warranty Period. This Limited Warranty is transferable from the original purchaser to subsequent owners, but the Warranty Period will not be extended in duration or expanded in coverage for any such transfer.

Notes:

Consumable supplies or accessories used with this product including REFEEL cartridges are not covered by this warranty.

2. TOTAL SATISFACTION RETURN POLICY

If you are the original purchaser of the Product and you are not satisfied with this Product for any reason, you may return it in its original condition within thirty (30) days of the original purchase and receive a full refund.

3. WARRANTY CONDITIONS; HOW TO GET SERVICE IF YOU WANT TO CLAIM UNDER THIS LIMITED WARRANTY

Before making a claim under this Limited Warranty, the owner of the Product must (a) notify Touchland of the intention to claim by visiting touchland.com during the Warranty Period and providing a description of the alleged failure,

and (b) comply with Touchland return shipping instructions. Touchland will have no warranty obligations with respect to a returned Product if it determines, in its reasonable discretion after examination of the returned Product, that the Product is an Ineligible Product (defined below). Touchland will bear all costs of return shipping to owner and will reimburse any shipping costs incurred by the owner, except with respect to any Ineligible Product, for which owner will bear all shipping costs.

4. WHAT THIS LIMITED WARRANTY DOES NOT COVER

This Limited Warranty does not cover the following (collectively “Ineligible Products”): Products marked as “sample” or “Not for Sale”, or sold “AS IS”; or Products that have been subject to: (a) modifications, alterations, tampering, or improper maintenance or repairs; (b) handling, storage, installation, testing, or use not in accordance with the User’s Guide or other instructions provided by Touchland; (c) abuse or misuse of the Product; (d) breakdowns, fluctuations, or interruptions in electric power or the telecommunications network; or (e) Acts of God, including but not limited to lightning, flood, tornado, earthquake, or hurricane. This Limited Warranty does not cover consumable parts, including batteries, unless damage is due to defects in materials or workmanship of the Product, or software (even if packaged or sold with the product). Touchland recommends that you use only authorized service providers for maintenance or repair. Unauthorized use of the Product or software can impair the Product’s performance and may invalidate this Limited Warranty.

5. DISCLAIMER OF WARRANTIES

EXCEPT AS STATED ABOVE IN THIS LIMITED WARRANTY, AND TO THE MAXIMUM EXTENT PERMITTED BY APPLICABLE LAW, TOUCHLAND DISCLAIMS ALL EXPRESS, IMPLIED, AND STATUTORY WARRANTIES AND CONDITIONS WITH RESPECT TO THE PRODUCT, INCLUDING THE IMPLIED WARRANTIES OF MERCHANTABILITY AND FITNESS FOR A PARTICULAR PURPOSE. TO THE MAXIMUM EXTENT PERMITTED BY APPLICABLE LAW, TOUCHLAND ALSO LIMITS THE DURATION OF ANY APPLICABLE IMPLIED WARRANTIES OR CONDITIONS TO THE DURATION OF THIS LIMITED WARRANTY.

6. LIMITATION OF DAMAGES

IN ADDITION TO THE ABOVE WARRANTY DISCLAIMERS, IN NO EVENT WILL TOUCHLAND BE LIABLE FOR ANY CONSEQUENTIAL, INCIDENTAL, EXEMPLARY, OR SPECIAL DAMAGES, INCLUDING ANY DAMAGES FOR LOST

DATA OR LOST PROFITS, ARISING FROM OR RELATING TO THIS LIMITED WARRANTY OR THE PRODUCT, AND NEST LABS' TOTAL CUMULATIVE LIABILITY ARISING FROM OR RELATED TO THIS LIMITED WARRANTY OR THE PRODUCT WILL NOT EXCEED THE AMOUNT ACTUALLY PAID FOR THE PRODUCT BY THE ORIGINAL PURCHASER.

7. LIMITATION OF LIABILITY

THE TOUCHLAND ONLINE SERVICES (“SERVICES”) PROVIDE YOU INFORMATION (“PRODUCT INFORMATION”) REGARDING YOUR TOUCHLAND PRODUCTS OR OTHER PERIPHERALS CONNECTED TO YOUR PRODUCTS (“PRODUCT PERIPHERALS”). THE TYPE OF PRODUCT PERIPHERALS THAT MAY BE CONNECTED TO YOUR PRODUCT MAY CHANGE FROM TIME TO TIME. WITHOUT LIMITING THE GENERALITY OF THE DISCLAIMERS ABOVE, ALL PRODUCT INFORMATION IS PROVIDED FOR YOUR CONVENIENCE; “AS IS”, AND “AS AVAILABLE”. TOUCHLAND DOES NOT REPRESENT, WARRANT, OR GUARANTEE THAT PRODUCT INFORMATION WILL BE AVAILABLE, ACCURATE, OR RELIABLE OR THAT PRODUCT INFORMATION OR USE OF THE SERVICES OR PRODUCT WILL PROVIDE SAFETY IN YOUR HOME. YOU USE ALL PRODUCT INFORMATION, THE SERVICES, AND THE PRODUCT AT YOUR OWN DISCRETION AND RISK. YOU WILL BE SOLELY RESPONSIBLE FOR (AND TOUCHLAND DISCLAIMS) ANY AND ALL LOSS, LIABILITY, OR DAMAGES, INCLUDING TO YOUR WIRING, FIXTURES, ELECTRICITY, HOME, PRODUCT, PRODUCT PERIPHERALS, COMPUTER, MOBILE DEVICE, AND ALL OTHER ITEMS AND PETS IN YOUR HOME, RESULTING FROM YOUR USE OF THE PRODUCT INFORMATION, SERVICES, OR PRODUCT. PRODUCT INFORMATION PROVIDED BY THE SERVICES IS NOT INTENDED AS A SUBSTITUTE

FOR DIRECT MEANS OF OBTAINING THE INFORMATION. FOR EXAMPLE, A NOTIFICATION PROVIDED THROUGH THE SERVICE IS NOT INTENDED AS A SUBSTITUTE FOR AUDIBLE AND VISIBLE INDICATIONS IN THE HOME AND ON THE PRODUCT, NOR FOR A THIRD PARTY MONITORING SERVICE THAT MONITORS ALARM STATE.

8. YOUR RIGHTS AND THIS LIMITED WARRANTY

This Limited Warranty gives you specific legal rights. You may also have other legal rights that vary by state, province, or jurisdiction. Likewise, some of the limitations in this Limited Warranty may not apply in certain states. The terms of this Limited Warranty will apply to the extent permitted by applicable law. For a full description of your legal rights you should refer to the laws applicable in your jurisdiction and you may wish to contact a relevant consumer advisory service.



